

Students with ASD

Some useful considerations
for professionals

Australian legislation

1992: Disability Discrimination ACT: **(DDA)**

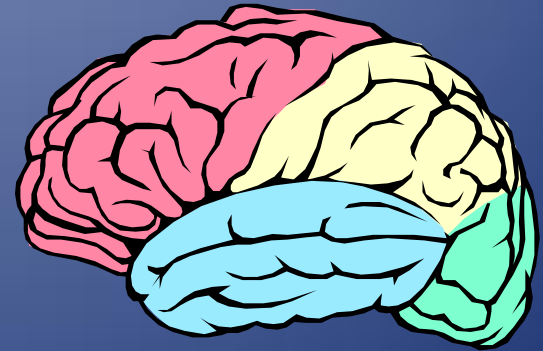
2005: A set of standards to supplement the DDA

Features of the DDA

1. DDA defines both the traditional impairment (physical, intellectual, psychiatric & sensory disabilities) as well others such as learning disabilities, ADHD, behaviour problems and physical disfigurements.
2. The standards address: enrolment, curriculum, participation, student support services and elimination of victimisation.

What is Autism Spectrum Disorder?

ASD is a developmental disability in which there is dysfunction of some parts of the brain and central nervous system. This affects how a child learns to understand and use language and to interact with people and the environment.



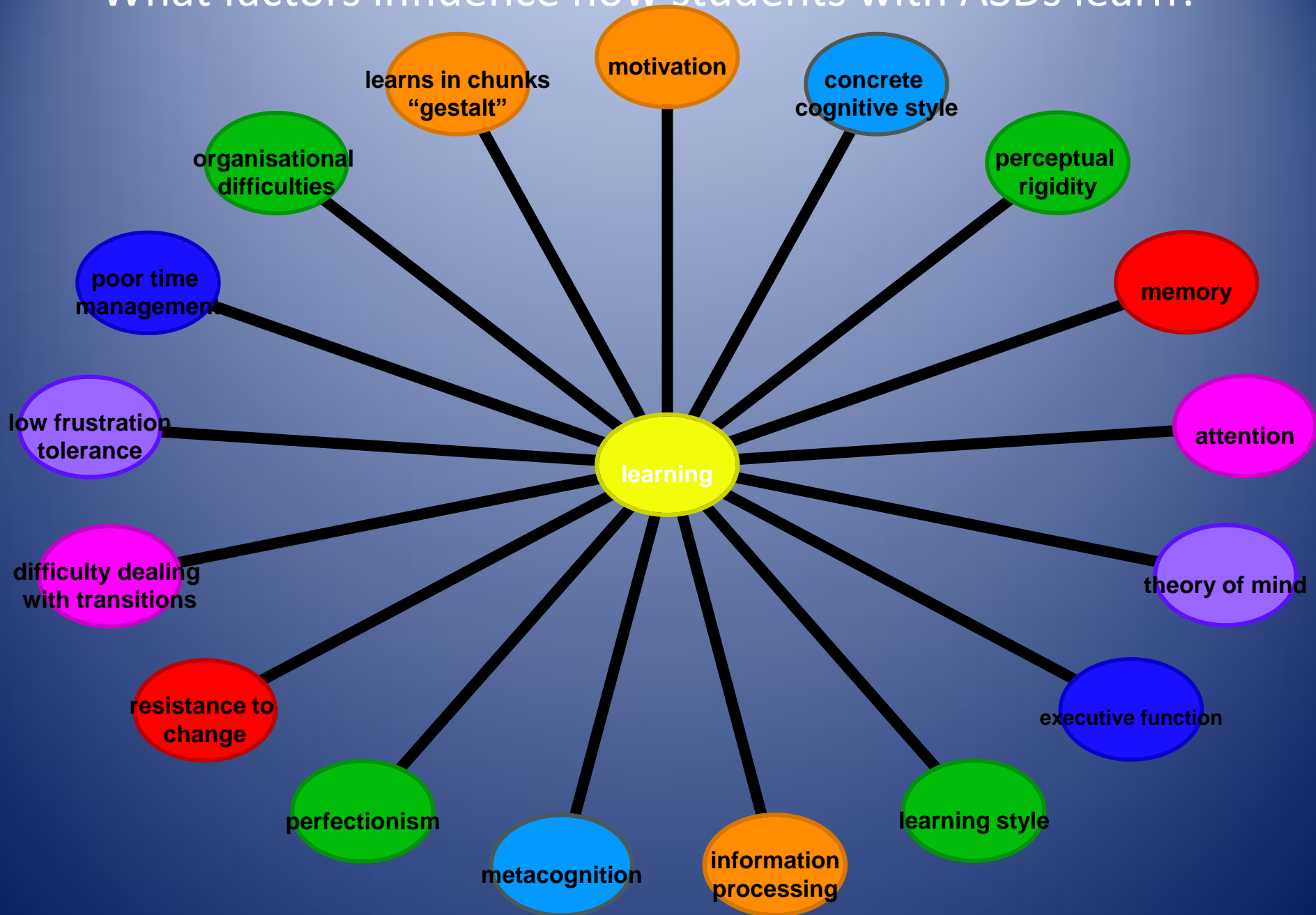
Cognitive Strengths of Aspies

Characterised by at least four of the following:

- strong preference for detail over gestalt
- original, often unique perspective in problem solving
- exceptional memory and/or recall of details often forgotten or disregarded by others, for example: names, dates, schedules, routines
- avid perseverance in gathering and cataloguing information on a topic of interest
- persistence of thought
- encyclopaedic or "CD ROM" knowledge of one or more topics
- knowledge of routines and a focused desire to maintain order and accuracy
- clarity of values/decision making unaltered by political or financial factors

From: The Discovery of "Aspie" Criteria by Attwood and Gray

What factors influence how students with ASDs learn?



Activity: What factors influence how students with ASDs learn?

You will be given a characteristic from the previous page.

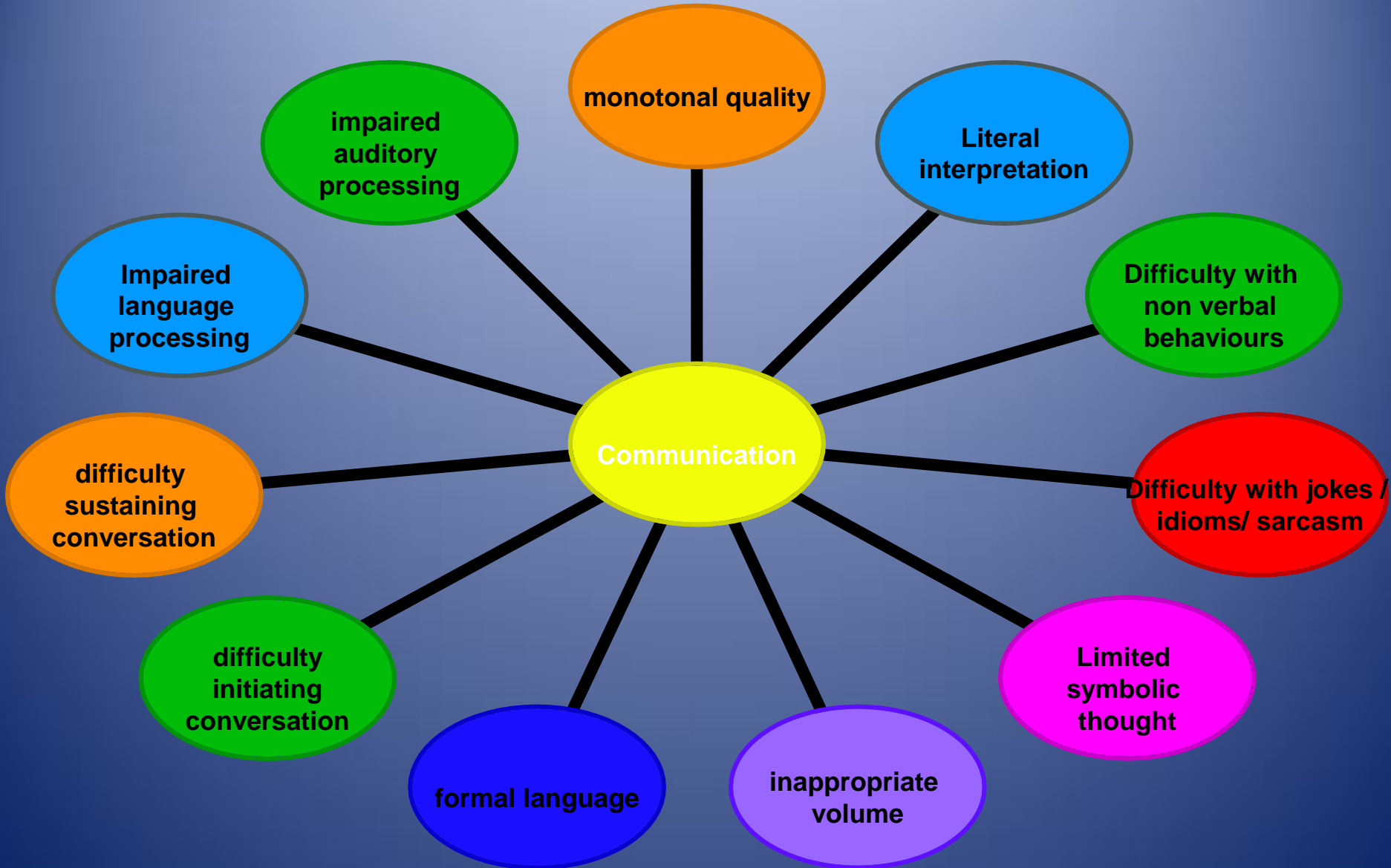
Answer the following questions:

Describe characteristic:	
Why and how does this characteristic affect the student with an ASD?	How does this characteristic impact upon the student with an ASD's learning in the classroom?

Professional Reflection.....

What strategies can YOU use
as a class teacher
to enhance the learning of a student with
ASD in the classroom?

What factors influence how students with an ASD communicate?



Activity:

You will be given a characteristic from the previous page.

Answer the following questions:

Describe characteristic:	
Why and how does this characteristic affect the student with an ASD?	How does this characteristic affect the student with an ASD's communication in the classroom?

Professional Reflection.....

What strategies can YOU use as a class teacher to enhance the communication of a student with ASD in the classroom?

Ideas and notes

-
-
-
-
-
-
-
-