

# Students with ASD

## Australian legislation

1992: Disability Discrimination ACT: (DDA)

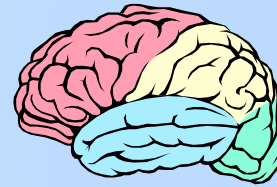
2005: A set of standards to supplement the DDA

Features of the DDA

1. DDA defines both the traditional impairment (physical, intellectual, psychiatric & sensory disabilities) as well others such as learning disabilities, ADHD, behaviour problems and physical disfigurements.
2. The standards address: enrolment,

## What is Autism Spectrum Disorder?

ASD is a developmental disability in which there is dysfunction of some parts of the brain and central nervous system. This affects how a child learns to understand and use language and to interact with people and the environment.



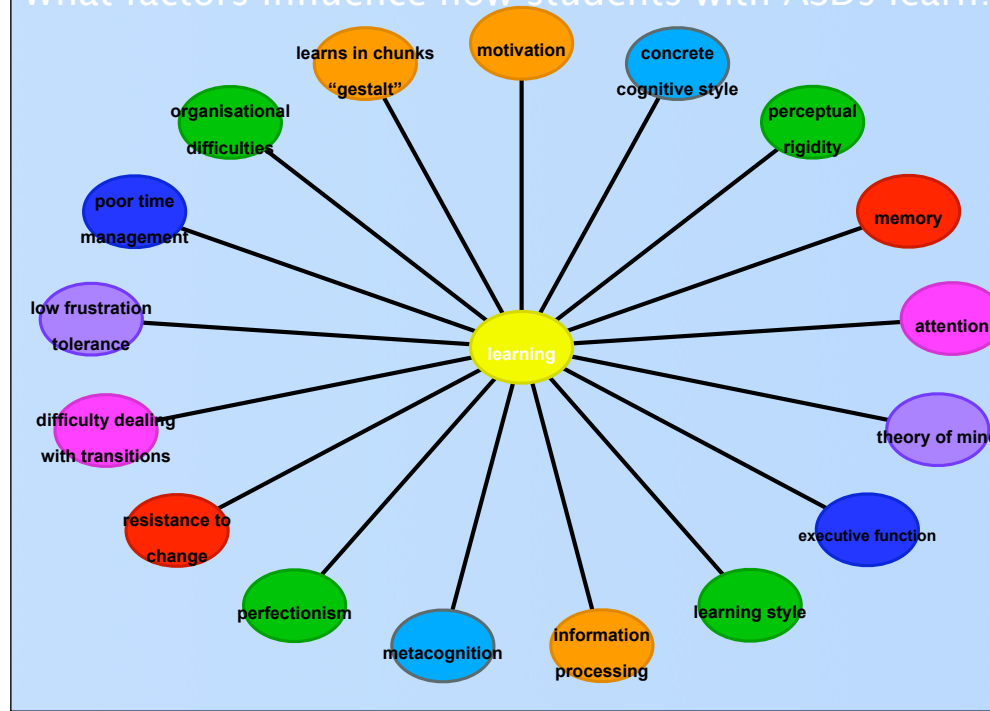
# Cognitive Strengths of Aspies

Characterised by at least four of the following:

- strong preference for detail over gestalt
- original, often unique perspective in problem solving
- exceptional memory and/or recall of details often forgotten or disregarded by others, for example: names, dates, schedules, routines
- avid perseverance in gathering and cataloguing information on a topic of interest
- persistence of thought
- encyclopaedic or "CD ROM" knowledge of one or more topics
- knowledge of routines and a focused desire to maintain order and accuracy
- clarity of values/decision making unaltered by political or financial factors

From: The Discovery of "Aspie" Criteria by Attwood and Gray

# What factors influence how students with ASDs learn?



**Activity:** What factors influence how students with ASDs learn?

You will be given a characteristic from the previous page.

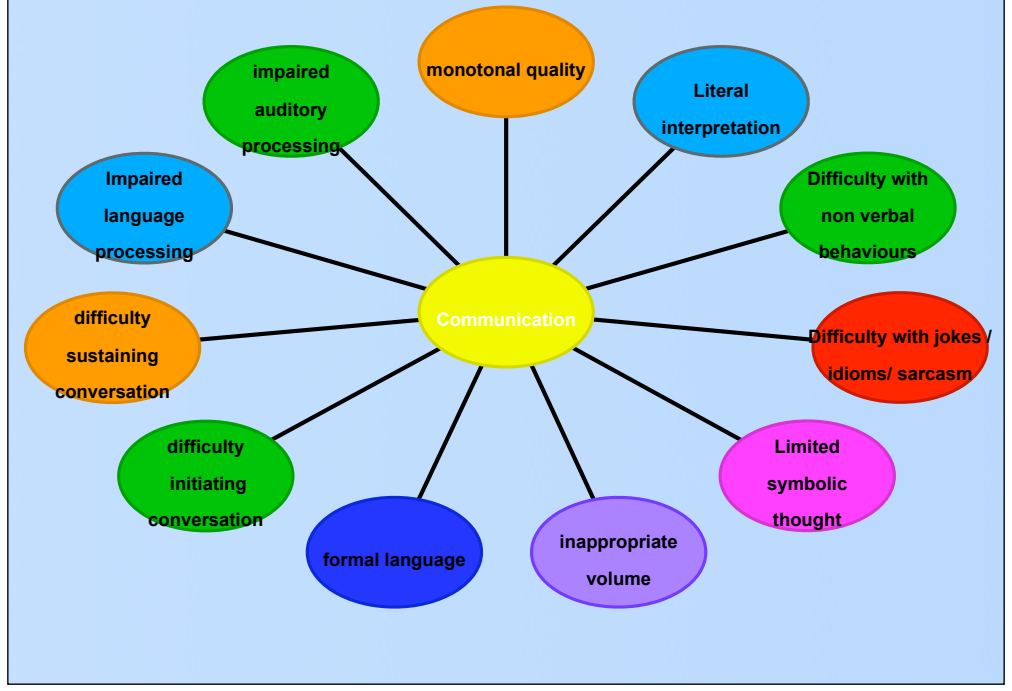
Answer the following questions:

Describe characteristic:	
Why and how does this characteristic affect the student with an ASD?	How does this characteristic impact upon the student with an ASD's learning in the classroom?

## **Professional Reflection.....**

What strategies can YOU use  
as a class teacher  
to enhance the learning of a  
student with ASD in the classroom?

What factors influence how students with an ASD communicate?





## Activity:

You will be given a characteristic from the previous page.

Answer the following questions:

Describe characteristic:	
Why and how does this characteristic affect the student with an ASD?	How does this characteristic affect the student with an ASD's communication in the classroom?

## **Professional Reflection.....**

What strategies can YOU use as a class teacher to enhance the communication of a student with ASD in the classroom?

## Ideas and notes

- 
- 
- 
- 
- 
- 
- 
- 
-